

# AL-E35

## Auto Lensmeter

Ray Vision  
 Ray Vision International Corp.  
 Tel.: 86-10-51029818  
 Email: sales@ray-vision.com  
 www.ray-vision.com

Ray Vision

# AL-E35

## Auto Lensmeter



### TECHNICAL INDEX

Measuring range  
 Sphere: 0 to ±35D ( 0.01D/0.06D/0.12D/0.25D steps )

Measuring range		
< 0D, ≥ -5D	> 0D, ≤ +5D	± 0.06
< -5D, ≥ -10D	> +5D, ≤ +10D	± 0.09
< -10D, ≥ -15D	> +10D, ≤ +15D	± 0.12
< -15D, ≥ -20D	> +15D, ≤ +20D	± 0.18
< -20D, ≥ -35D	> +20D, ≤ +35D	± 0.25

Cylinder: 0 to ±10D ( 0.01D/0.06D/0.12D/0.25D steps )  
 Axis: 0° to 180° ( 1° steps )  
 ADD: 0 to 10D ( 0.01D/0.06D/0.12D/0.25D steps )  
 Prism: 0 to 15Δ ( 0.01Δ )

Measuring range	Accuracy
> 0Δ, ≤ 5Δ	0.1Δ
> 5Δ, ≤ 15Δ	0.2Δ

Cylinder mode: +, + / - , -  
 Prism mode: X-Y: Cartesian Coordinates H: I, O . V: U, D  
 P-B: Polar Coordinates  
 mm: mm expression

Reading resolving power: 0.01D/0.06D/0.12D/0.25D

PD measure

Measure single vision lens, bifocal lens, trifocal lens and progressive lens, etc.

Contact lens measure

UV transmissivity test

Measurable transmissivity: > 10%; > 20% at ±10D and over

Contact lenses: 0 to ±25D, BC 6.00 to 9:00

Display: 7.0-inch HD touch color display

Menu: readable diagram, easy operation

Lens diameter: 20mm-100mm

Power source: AC100 ( ±10% ) -240 ( ±10% ) V 50/60Hz 40VA

Power consumption: 40W

Weight: 15lbs

Dimensions (packing): 22" x 14" x 14" ( LxWxH )

Environmental condition

- Temperature: 5-40°C ( In usage )  
 -20-60°C ( In storage/transference )
- Humidity: 30-85% ( Non-condensing ) ( In usage )  
 10-95% ( In storage/transference )
- Atmospheric pressure: 700-1060hpa
- Altitud: up to 2000m
- Others: No harmful dust or smoke

Optional accessories: printer ( built-in thermosensitive paper size: 57mm )

- ① L/R sign
- ② Measurement mode
- ③ Data display
- ④ Menu
- ⑤ Frame VD / bifocal lens / trifocal lens measurement
- ⑥ Left lens measurement
- ⑦ Current working mode
- ⑧ Right lens measurement
- ⑨ Clearing the memorized data
- ⑩ Printing the fixed data

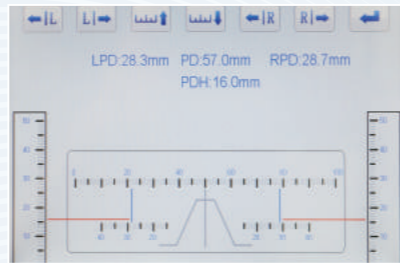
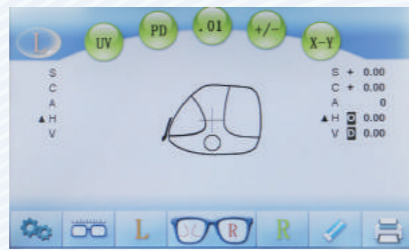
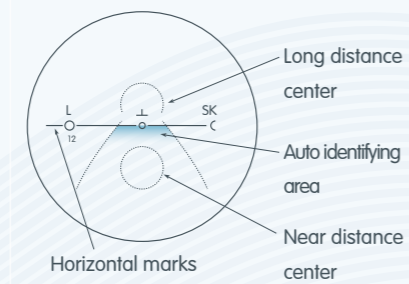


- 7.0-inch HD touch color display.
- Streamlined, faddish, abundant and atmospheric design.
- Green LED light source, ABBE compensation not required.
- Food-grade ABS material case, zero failure rate quality standard.
- Rapidly and automatically measure the progressive lens in high precision.
- Upgraded Hartmann intelligent measurement technology, faster, more accurate and stable.



### 「Fine marking device」

Precise structure design and assembly, excellent operating feel with strong stability, the center marking position won't offset over long-time use.



### Progressive lens measurement

Automatically determine the lens type – single vision lens or progressive lens, quickly locate long distance center and near distance center of progressive lens, accurate measurement of ADD values.



- ① LCD Screen
- ② Lens holder device
- ③ Ink box
- ④ pen
- ⑤ Lens/frame table
- ⑥ Nose holder(PD slider)
- ⑦ Nosepiece
- ⑧ Read button
- ⑨ On/Off

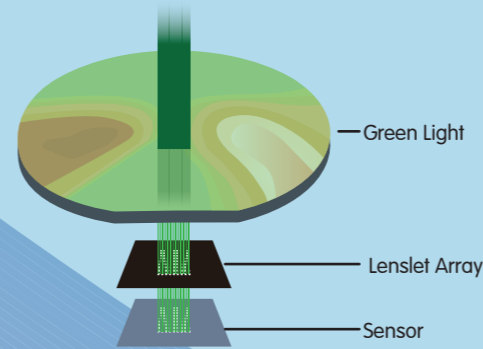
### Fine marking device

Precise structure design and assembly, excellent operating feel with strong stability, the center marking position won't offset over long-time use.

### Hartmann sensor with 145 multiple measurement points

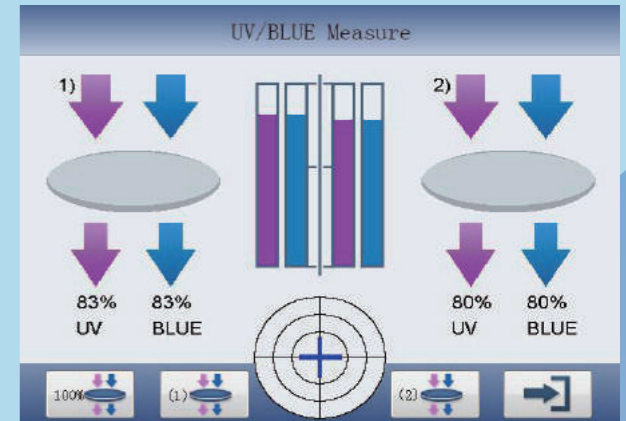
Hartmann 145 sense points, equipped with high speed and efficient CCD camera, fast accurate measurement, ABBE compensation not needed.

### Frame VD measurement



### UV/BLUE Measure

UV transmittance of various lenses (coated lens, sunglasses, crystal lens) can be measured in the range of 0 to 100% by 1% or 5% increments, it provides the references for the wearers to choose lenses according to the actual needs.



When measuring, please click on lens displayed in the monitor

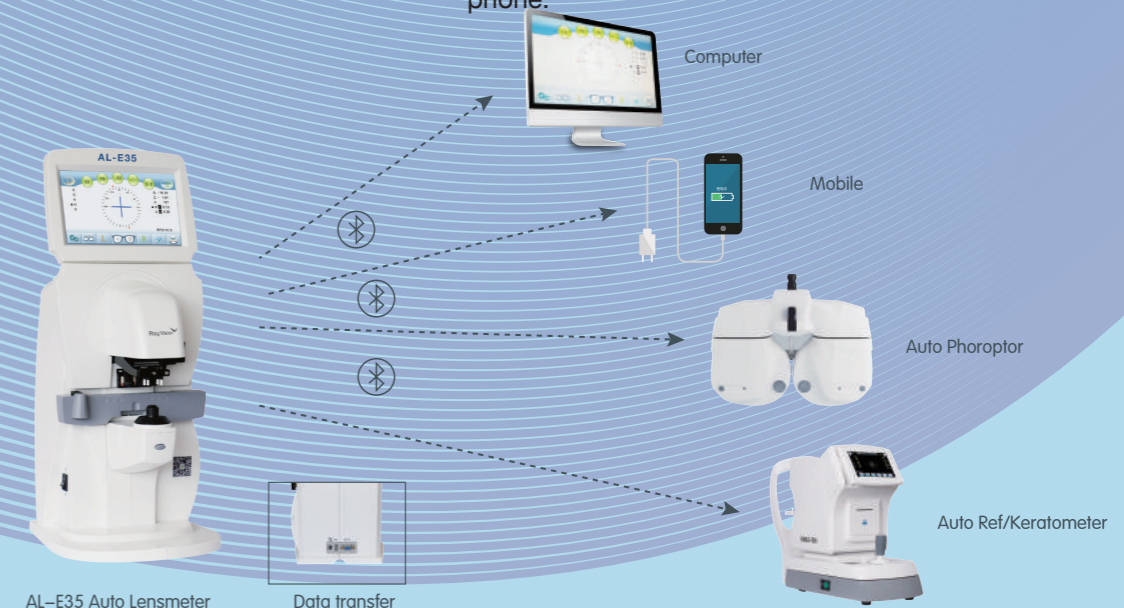
### Newly developed marking pins

Red and white ink, dots specifications: 0.8mm / 1.0mm / 1.2mm / 1.5mm. Smooth marking with perfect effect, the ink won't dry or overflow.



### Quick and easy data transfer

One USB port and RS232 port, can be connected to computer, phoropter, and auto refractometer ..., realize data transmission for storage or sharing with other instruments. It can be also used to recharge your mobile phone.



Full graphic HD LCD with 7.0-inch color display. Food-grade imported ABS material case from USA.

# AL-E35

Auto Lensmeter  
Technical characteristics